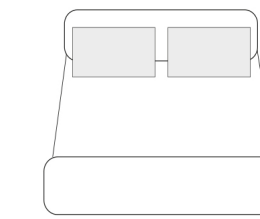


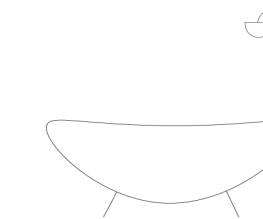


★
STARHOMES
Luxury Homes in Florence

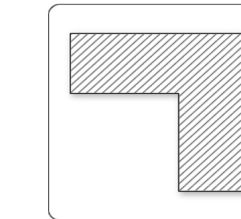
A wonderful portion of villa in Malmantile



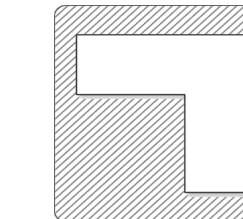
3
BEDROOM/S



2
BATHROOM/S



180 sq. m.
INTERIOR
SURFACE



2.000sq. m.
EXTERIOR
SURFACE



540.000,00
PRICE

A wonderful portion of villa on the Malmantile hills. The property opens on two sides with a private garden of 1000 sq. m., furthermore agricultural land of fruit trees of 1000 sq. m. Finely restored, classic apartment in villa of Tuscany taste, with terracotta floors, exposed wooden beams.

On the ground floor huge living room with fireplace, open kitchen, laundry room, and bathroom for the guests.

On the first floor three bedrooms, and bathroom with jacuzzi. The attic of 30 sq. m.

Beautiful view on the panoramic hills of Malmantile. At only 5 km of the Lastra Signa town, surrounded by the green of the olive trees and vineyards. Perfect for families that love lives in harmony with nature.









PLAN

PIANO TERRENO



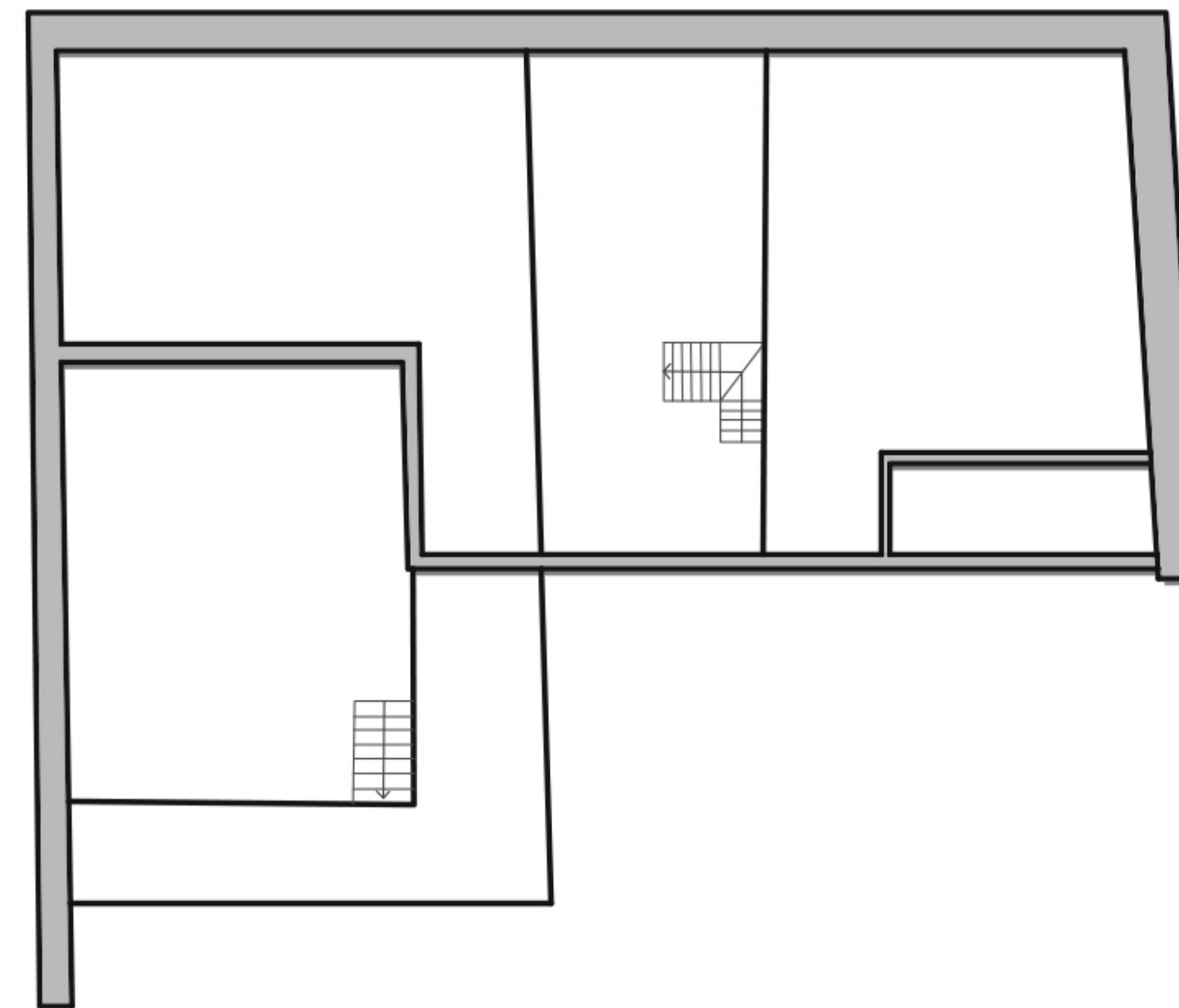
PLAN

PIANO PRIMO



PLAN

MANSARDA ABITABILE



DETAILS

ZONE: Lastra a Signa, Tuscany
TYPOLGY: Villa
INTERNAL SURFACE: 180 sq.m
EXTERNAL SURFACE: 2000 sq.m

Living room with fireplace
Kitchen
Laundry room
2 bathrooms
3 bedrooms

Attic of 30 sq. m.

1000 sq. m. garden
1000 sq m. agricultural land



POSITION



MALMANTILE
TUSCANY, ITALY

DISTANCE
LA STRA A SIGNA: 5KM
FLORENCE: 20 KM

★
STARHOMES
Luxury Homes in Florence

Piazza della Signoria, 4
Firenze
Tel. +39 055 2382944
info@starhomes.it